

### CLONING SOFTWARE CS-V80

- ◇ This cloning software is designed to perform data setting and cloning for the IC-V80/V80E VHF TRANSCEIVER.
- ◇ **HELP FILE:** CS-V80 has a Help file to describe functions and operation.

## ■ System requirement

To use this program, the following hardware and software are required:

### PC

- Microsoft® Windows® 2000, XP or Microsoft® Windows Vista® installed

/// This instruction manual is described using Microsoft® Windows Vista®.

- RS-232C serial port (D-sub 9-pin) or USB port

### Other item

- Optional OPC-478 CLONING CABLE (RS-232C type) or OPC-478UC\* CLONING CABLE (USB type)

### NOTE:

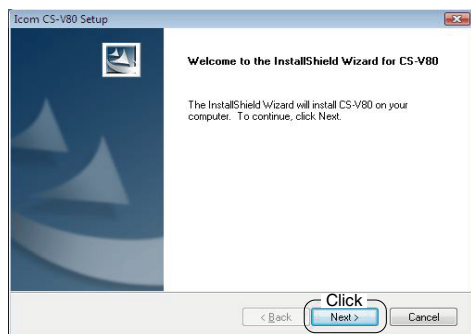
- When using the OPC-478, RS-232C type cloning cable, select "Normal" for the cloning speed setting in [COM port] menu of the cloning software. Otherwise, a cloning error may occur.
- When using the OPC-478UC, USB type cloning cable, you must install a USB driver. The driver is supplied with the OPC-478UC. See the OPC-478UC instruction manual for details.

\* The USB driver, supplied with the OPC-478UC, is not supported for Microsoft® Windows Vista® (64 bit).

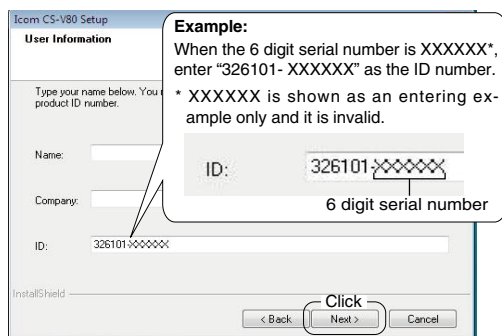
## ■ Software installation

/// When installing the software, log in as the **administrator**.

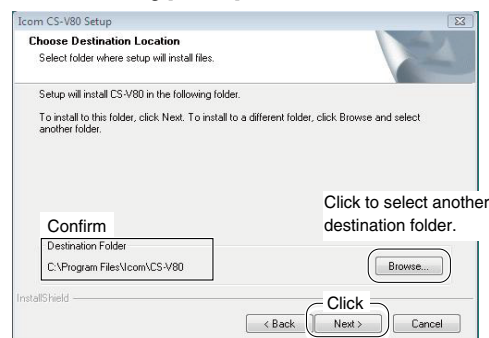
- ① Make sure Windows has completed its start-up, and no other applications are running.
- ② Insert the CD into the CD drive.
- If "User Account Control" appears, click [Allow] to continue.
- ③ "Welcome to the InstallShield Wizard for CS-V80" appears, and then click [Next>].



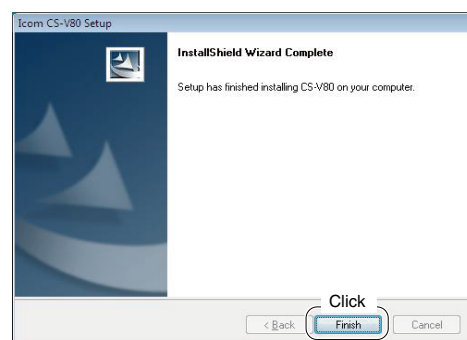
- ④ "User Information" appears, and then type your name, your company name and the product ID number in the following manner. Then click [Next >].
- ID number: 326101-(6 digit serial number)
- /// Please check the serial number on the CD.



- ⑤ "Choose Destination Location" appears, and then click [Next>].
- If desired, click [Browse...] to select another destination folder before clicking [Next >].



- ⑥ After the installation is completed, "InstallShield Wizard Complete" appears, and then click [Finish].

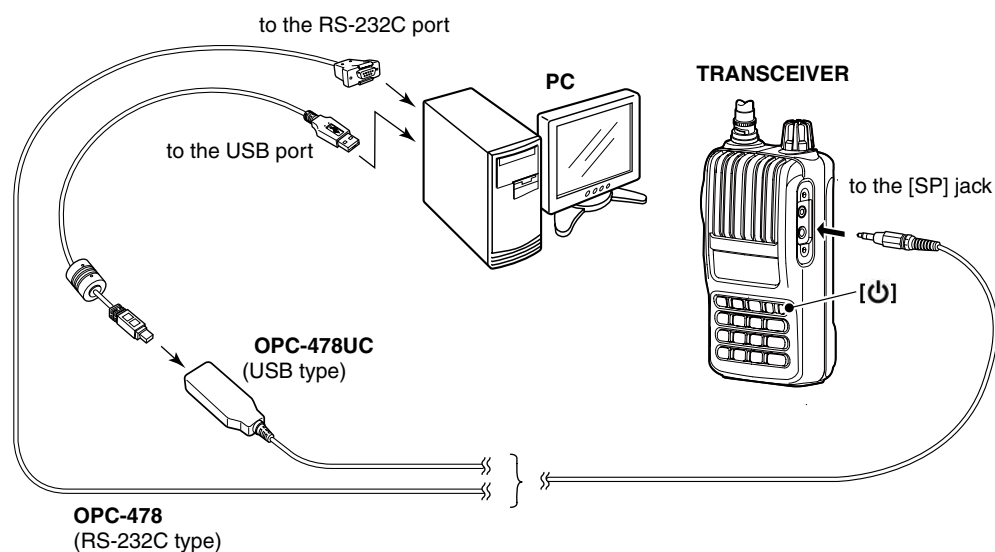


- ⑦ Eject the CD.
- ⑧ 'CS-V80' appears on the program menu, and a 'CS-V80' shortcut icon appears on the desktop.
- You can uninstall the program using the "Uninstall a program" in the Windows Control Panel.

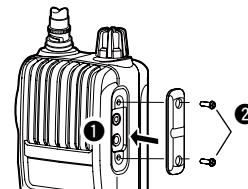
## ■ Connection

All cloning operations are performed from the PC's keyboard.

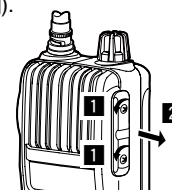
- ① Make sure the transceiver power is OFF.
- ② Connect the cloning cable as illustrated below.



**Attaching:**  
Attach the jack cover (①), then tighten the screws (②).



**Detaching:**  
Remove the screws (①), then detach the jack cover (②).



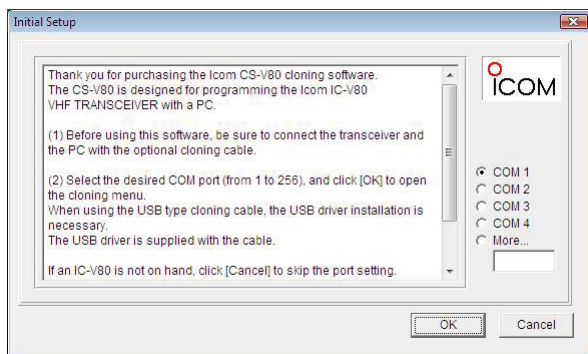
## ■ Initial setup screen

After starting up the CS-V80, "Initial Setup" appears.


Read the instruction thoroughly, and enter a desired COM port number (from 1 to 256), then click [OK] to open the cloning menu.

Click [Cancel] if you want to skip the COM port setting and continue to program without a transceiver.

When programming the software without the transceiver, some items do not appear on the setting screen, and therefore you cannot program them.



## ■ Programming information

- We recommend that you upload all the transceiver's data before starting to enter/edit parameters, even when the transceiver is factory fresh.  
Click , or click [Clone] in the top menu of the cloning software, and then select "Read <- TR" to start uploading.
- NEVER turn OFF the transceiver and the PC while uploading/writing cloning data. Otherwise, the data could be lost or deleted.

Please refer to the Help file of the cloning software for help with the function or setting meaning.  
To open the Help file, click [Help] in the top menu of the cloning software and select "Contents," or simply push the [F1] key of the PC's keyboard.

Icom, Icom Inc. and the Icom logo are registered trademarks of Icom Incorporated (Japan) in Japan, the United States, the United Kingdom, Germany, France, Spain, Russia and/or other countries.  
Microsoft, Windows and Windows Vista are registered trademarks of Microsoft Corporation in the United States and/or other countries.  
All other products or brands are registered trademarks or trademarks of their respective holders.