

# ICOM

## CLONING SOFTWARE CS-V88

### INSTRUCTIONS

- ◆ This cloning software is designed to perform data entry, settings, and cloning for the IC-V88 VHF TRANSCEIVER and for the IC-U88 UHF TRANSCEIVER.
- ◆ The CS-V88 has a Help file to describe functions and operations.

## ■ System requirements

The following PC and cable are required to use the CS-V88.

### PC

- Microsoft® Windows® 8 (32/64 bit)\*
- Microsoft® Windows® 7 (32/64 bit)
- Microsoft® Windows Vista® (32 bit)
- Microsoft® Windows® XP (32 bit)
- \*Except for Microsoft® Windows® 8 RT
- A USB 1.1 or 2.0 port
- A CD drive

### Cable (Purchase separately)

- OPC-478UC CLONING CABLE

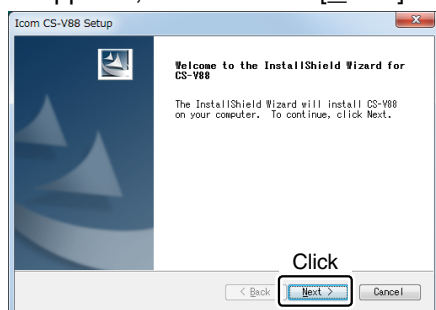
### NOTE:

- Before connecting the OPC-478UC to your PC, you must install its USB driver. Read the OPC-478UC instruction manual for details.
- These instructions are based on using Windows 7.

## ■ Software installation

When installing the software, log in as the **administrator**.

- ① Make sure Windows has completed its startup, and no other applications are running.
- ② Insert the CD into a CD drive.
- ③ Double-click the “setup.exe” contained in the CD.
  - If “User Account Control” appears, click [Yes] to continue.
- ④ “Welcome to the InstallShield Wizard for CS-V88” appears, and then click [Next>].



- ⑤ “User Information” appears, and then enter your name (Optional), your company name (Optional) and the product ID number in the following manner.
  - Product ID number: 362221-(6 digit serial number)Then click [Next >].

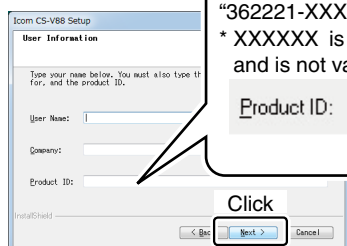
Please check the serial number on the CD. If you downloaded the software, enter the ID provided by your distributors.

### Example:

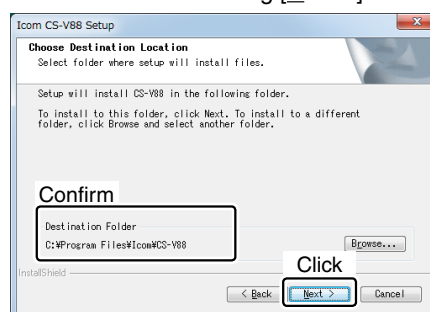
When the serial number is XXXXXX\*, enter “362221-XXXXXX” as the ID number.

\* XXXXXX is shown as an example only, and is not valid.

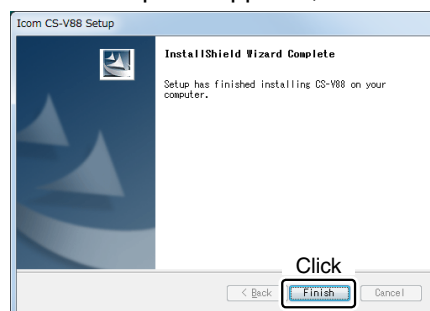
Product ID: 362221-XXXXXX  
6 digit serial number



- ⑥ “Choose Destination Location” appears, and then click [Next>].
  - If desired, click [Browse...] to select another destination folder before clicking [Next >].



- ⑦ After the installation is completed, “InstallShield Wizard Complete” appears, and then click [Finish].



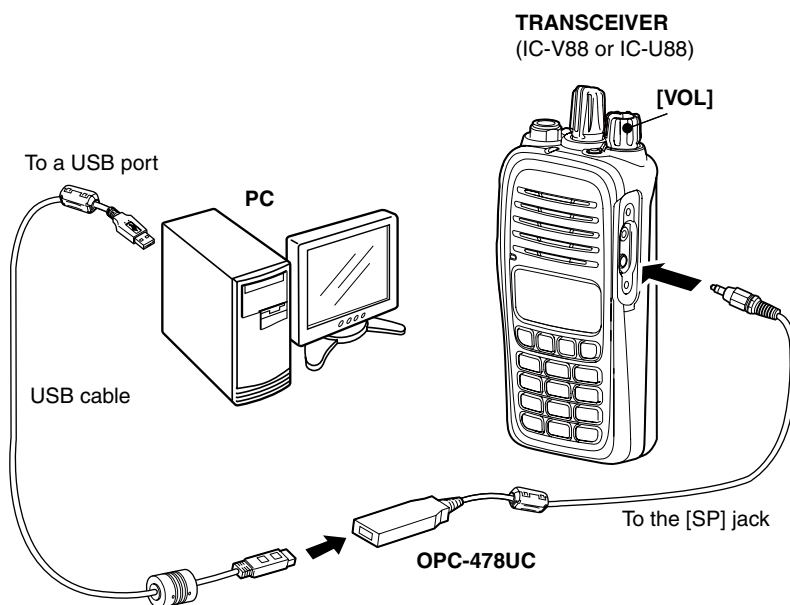
- ⑧ Eject the CD.
- ⑨ A program group ‘CS-V88’ appears in the program menu, and a ‘CS-V88’ shortcut icon appears on the desktop.
  - You can uninstall the cloning software using “Uninstall a program” in the Windows Control Panel.

## ■ Connection

Make sure the transceiver power is OFF.

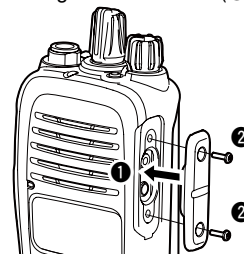
All cloning operations are performed from the PC's keyboard.

- ① Connect the transceiver and the PC with the OPC-478UC cloning cable.
- ② Rotate **[VOL]** to turn ON the transceiver.



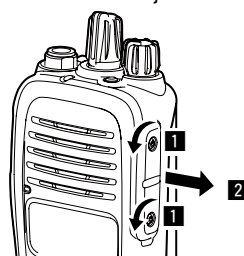
### Attaching:

Attach the jack cover (1), then tighten the screws (2).




### Detaching:

Remove the screws (1), then detach the jack cover (2).



## ■ Programming information

### NOTE:

- To prevent data loss, you should first read (download) all the transceiver's data before entering or editing parameters using the cloning software.  
Click , or click [Clone] in the top menu of the cloning software, and then select "Read <- TR" to start downloading.
- While reading or writing cloning data, **NEVER** turn OFF the transceiver or the PC, and **NEVER** disconnect the cable. Otherwise, the data could be lost or corrupted.

Refer to the Help file of the cloning software for assistance with the functions or settings.  
To open the Help file, click [Help] in the top menu of the cloning software and select "Contents," or simply push the [F1] key on the PC's keyboard.

Icom, Icom Inc. and the Icom logo are registered trademarks of Icom Incorporated in Japan, the United States, the United Kingdom, Germany, France, Spain, Russia and/or other countries.  
Microsoft and Windows are registered trademarks of Microsoft Corporation in the U.S.A. and other countries.