

ICOM INSTRUCTIONS

CLONING SOFTWARE CS-M25

This cloning software is designed to perform data entry, settings, and cloning for the IC-M25/M25EURO VHF MARINE TRANSCEIVER.

The CS-M25 has a Help file to describe functions and operations.

These instructions are based on using Microsoft® Windows® 7.

■ System requirements

The following PC and cables are required to use the CS-M25.

PC

- Microsoft® Windows® 8.1 (32/64 bit)*
- Microsoft® Windows® 8 (32/64 bit)*
*Except for "RT" versions of Microsoft® Windows® 8.1 or Microsoft® Windows® 8.
- Microsoft® Windows® 7 (32/64 bit)
- Microsoft® Windows Vista® (32/64 bit)
- A USB 1.1 or 2.0 port
- CD drive

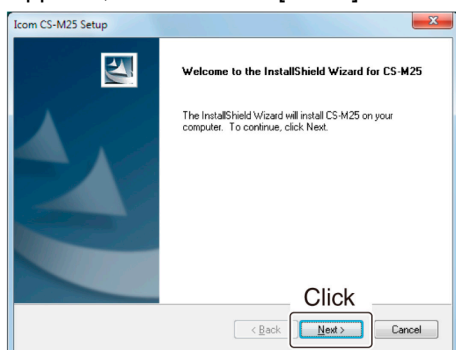
Cables (Purchase separately)

- OPC-1655 CLONING ADAPTER CABLE
- OPC-478UC CLONING CABLE

■ Software installation

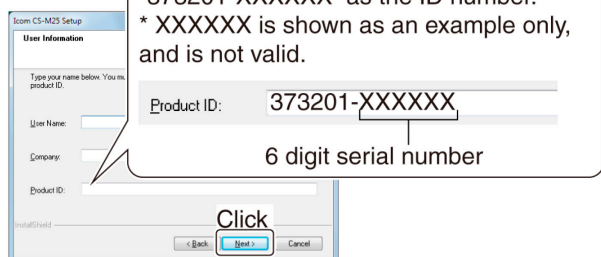
When installing the software, make sure Windows has completed its startup and log in as the **administrator**.

1. Make sure no other applications are running.
2. Insert the CD into a CD drive.
3. Double-click the "setup.exe" contained in the CD.
 - If "User Account Control" appears, click [Yes] to continue.
4. "Welcome to the InstallShield Wizard for CS-M25" appears, and then click [Next>].

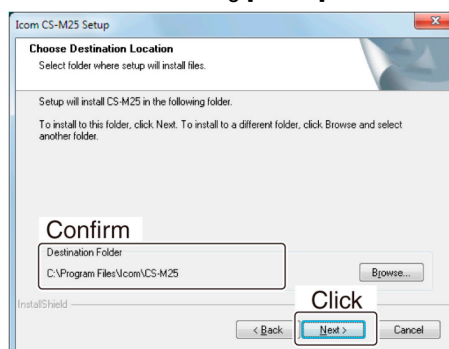


5. "User Information" appears. Type your name, your company name (optional), and the product ID number in the following manner, and then click [Next >].
 - Product ID number: 373201-(6 digit serial number)
 - Check the serial number on the CD.

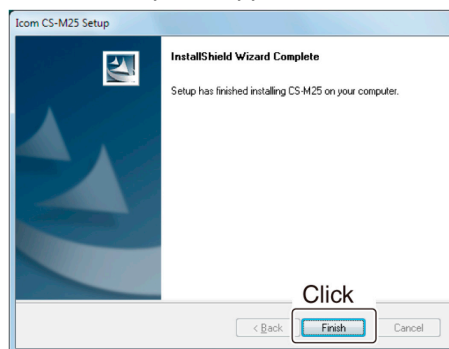
Example:
When the serial number is XXXXXX*, enter "373201-XXXXXX" as the ID number.
* XXXXXX is shown as an example only, and is not valid.



6. "Choose Destination Location" appears, and then click [Next>].
 - If desired, click [Browse...] to select another destination folder before clicking [Next >].



7. After the installation is completed, "InstallShield Wizard Complete" appears, and then click [Finish].



8. Eject the CD.
9. A program group 'CS-M25' appears on the program menu, and a shortcut icon appears on the desktop.
 - You can uninstall the cloning software using "Uninstall a program" in the Windows Control Panel.

■ Before connecting the OPC-478UC to a PC

To use the OPC-478UC CLONING CABLE, you must install a USB driver.

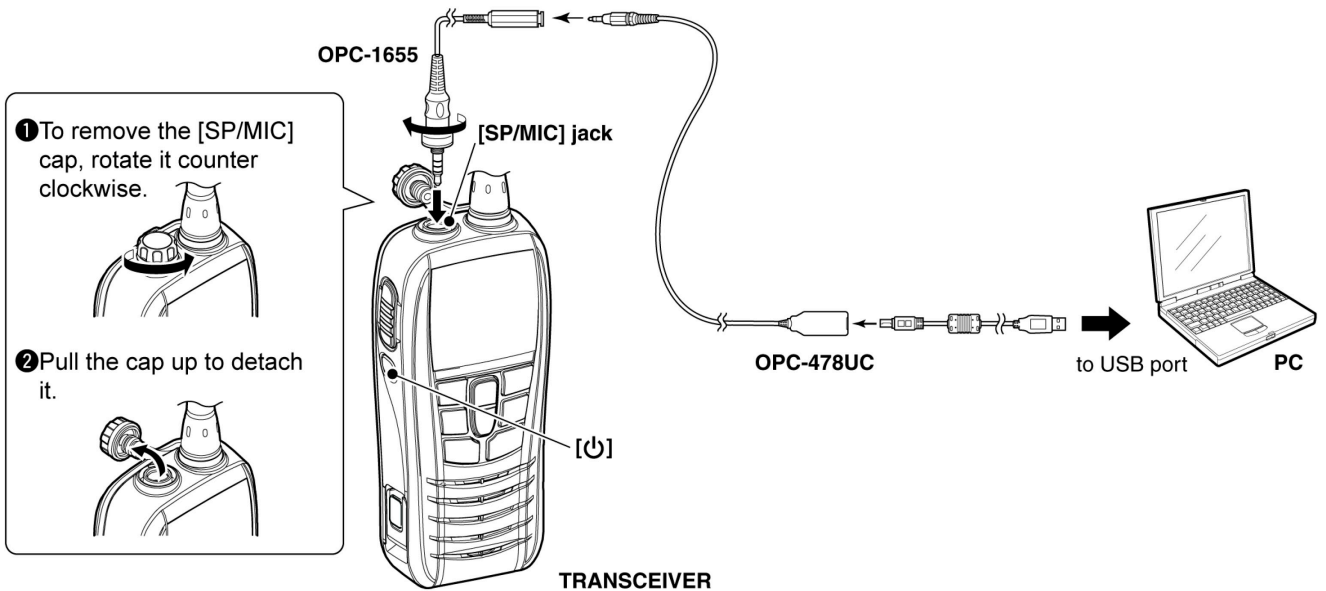
The latest USB driver and installation guide can be downloaded from the Icom website

(<http://www.icom.co.jp/world/support/download/firm/>).

Read the guide carefully before installing the driver.


■ Connecting the cables

1. Hold down [⏻] to turn OFF the transceiver.
2. Connect the cables as illustrated below.
3. Hold down [⏻] to turn ON the transceiver.



■ Cloning information

- To prevent data loss, you should first read (download) all the transceiver's data before entering or editing parameters using the cloning software, even when the transceiver is factory fresh.

Click , or [Clone] in the top menu of the cloning software, and then select "Read <- TR" to start downloading.

- While reading or writing cloning data, **NEVER** turn OFF the transceiver or the PC, and **NEVER** disconnect the cables. Otherwise, the data could be lost or corrupted.
- Before editing or entering, make a backup file onto your PC.
A backup file allows easy restoring if the setting data in the transceiver is accidentally deleted.
- Click [Model] in the top menu of the cloning software to select model type you are going to clone, USA, UK, EUR, HOL, FRG, AUS, EXP, or CHN.

Please refer to the cloning software's Help file for assistance with the functions or settings.

To open the Help file, click [Help] in the top menu of the cloning software and select "Contents," or simply push the [F1] key on the PC's keyboard.

Icom, Icom Inc. and Icom logo are registered trademarks of Icom Incorporated (Japan) in Japan, the United States, the United Kingdom, Germany, France, Spain, Russia, Australia, New Zealand, and/or other countries.

Microsoft, Windows, and Windows Vista are registered trademarks of Microsoft Corporation in the United States and/or other countries.

All other products or brands are registered trademarks or trademarks of their respective holders.

Icom Inc.

1-1-32 Kamiminami, Hirano-ku, Osaka 547-0003, Japan

Count on us!

A-7229H-1EX Printed in Japan

© 2015 Icom Inc.